

DETAIL 'G'

NOTE:

1. ALL TRENCHES SHALL BE EARTHED AT AN INTERVAL OF 30M ALONG THE LENGTH OF TRENCH & FREE ENDS.
2. THE EARTH STRIP (50x10 G.S. FLAT) SHALL BE WELDED TO EMBEDDED PLATE AT EVERY 1M INTERVAL.
3. WHERE THE CABLE RACKS ARE PROVIDED ON BOTH SIDES OF THE TRENCH, BOTH SIDES SHALL BE EARTHED AS PER ABOVE.

DETAIL FOR CONNECTING GI FLAT RUNNING ON TOP TIER TRENCH TO EMBEDDED PLATE.



EQUIPMENT EARTHING DETAILS CABLE TRENCH

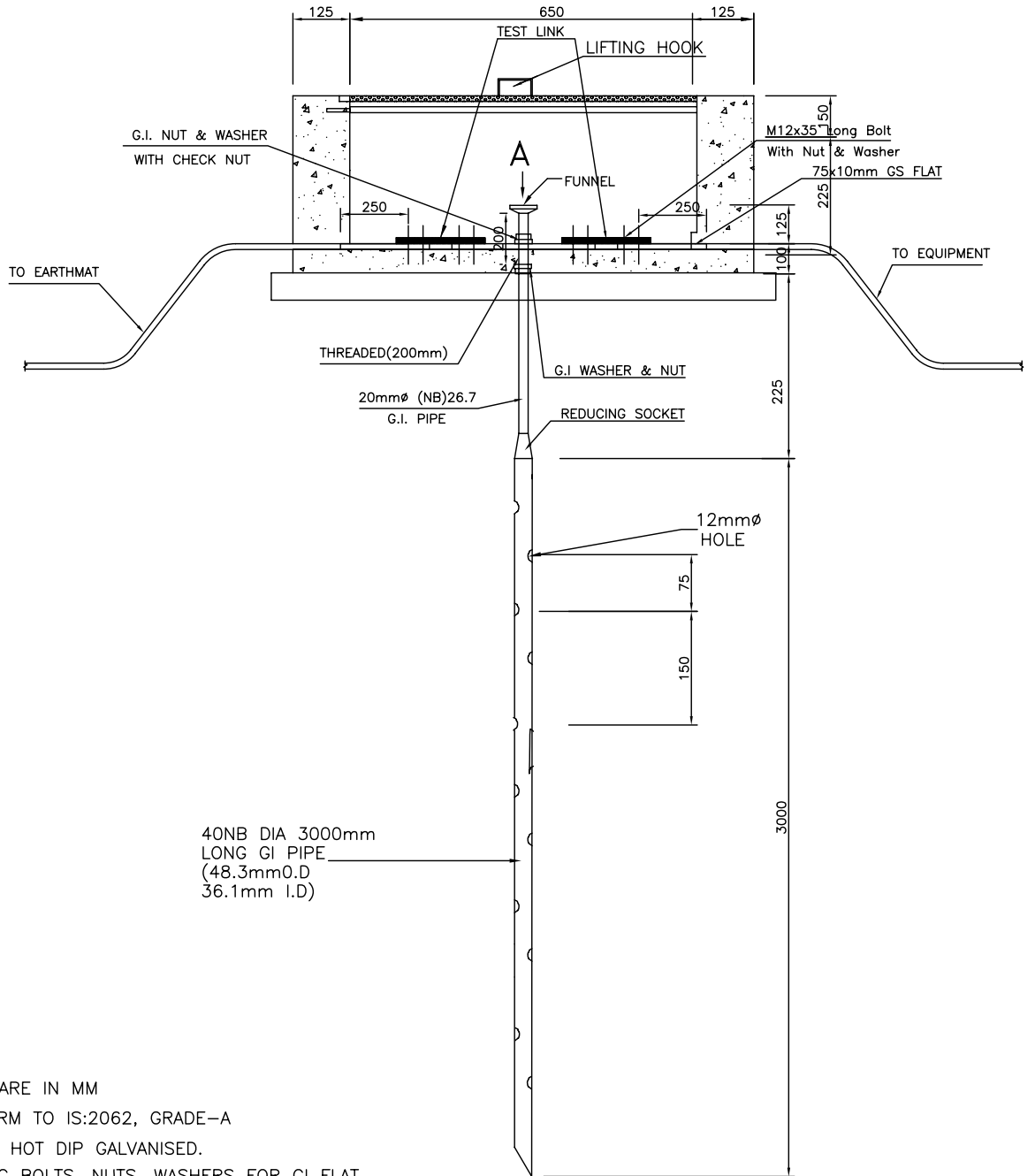
COMPU. DRG. REF.

DRG. NO.

TB-4-301-316-007

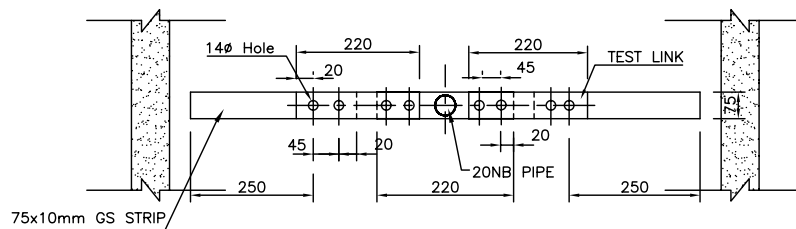
REV. 00

SHEET
10



NOTE:

1. ALL DIMENSIONS ARE IN MM
2. STEEL TO CONFORM TO IS:2062, GRADE-A
3. ALL ITEMS TO BE HOT DIP GALVANISED.
4. SUPPLY OF FIXING BOLTS, NUTS, WASHERS FOR GI FLAT EARTHING CONDUCTOR IS ALSO PART OF THE SCOPE
5. ALL NUT & BOLTS SHALL BE M10 OR ABOVE.



VIEW-A



EQUIPMENT EARTHING DETAILS

PIPE EARTH ELECTRODE

COMPUTERREF.NO.

DRG. No.

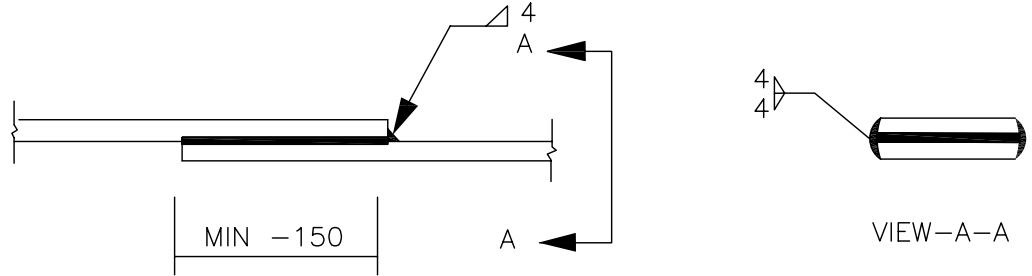
TB-4-301-316-007

REV. 00

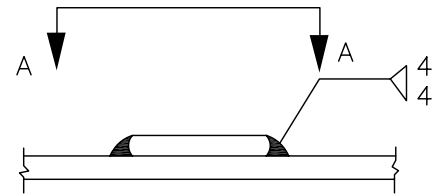
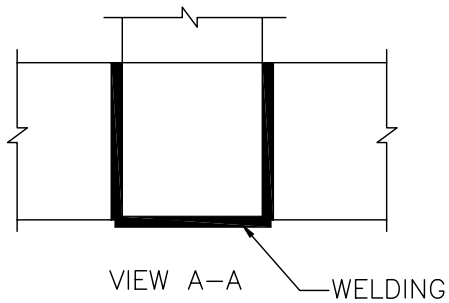
SHEET No.
21

STRIP TO STRIP

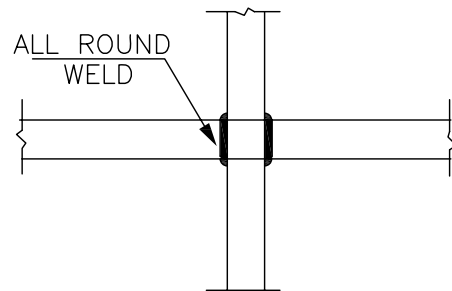
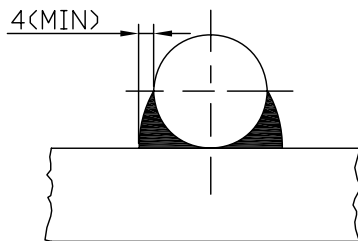
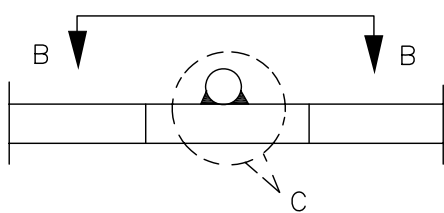
1. STRAIGHT LAP JOINT/RISER



2. CROSS LAP JOINT



RIGHT ANGLED JOINT (ROD TO ROD)



VIEW B-B



EQUIPMENT EARTHING DETAILS WELDING DETAIL

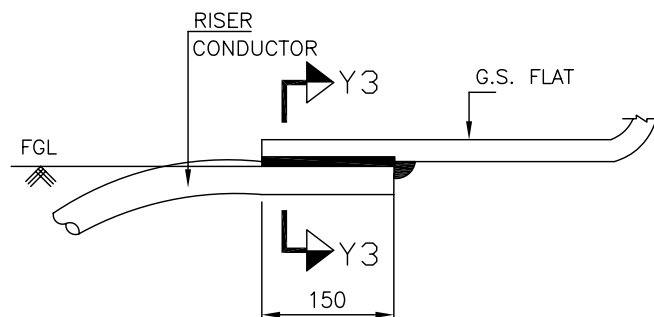
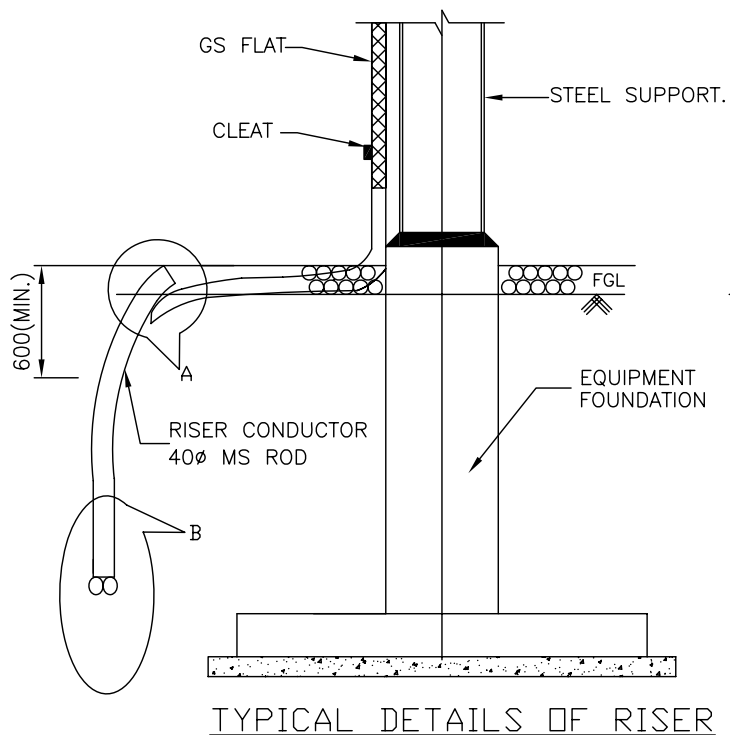
COMPUTERREF.NO.

DRG. No.

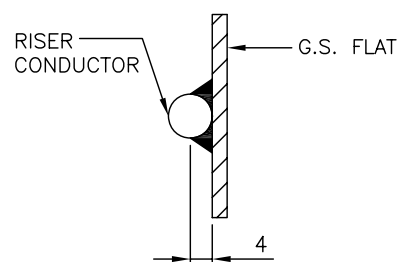
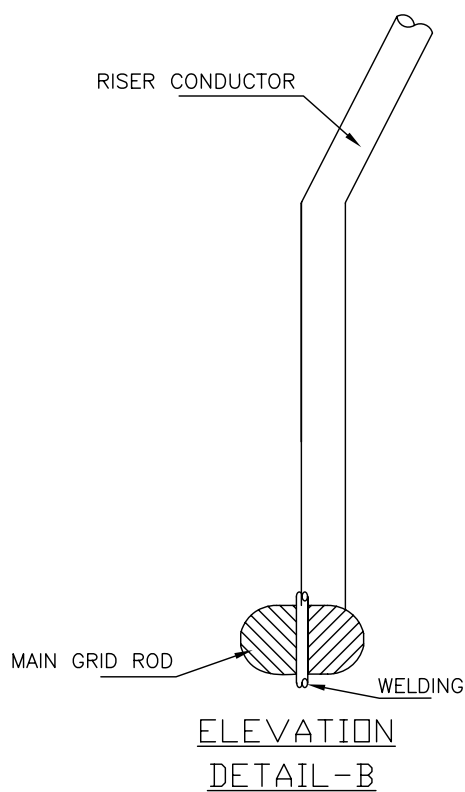
TB-4-301-316-007

REV. 00

SHEET No.
14



ELEVATION
DETAIL-A



SECTION Y3-Y3



EQUIPMENT EARTHING DETAILS WELDING DETAILS

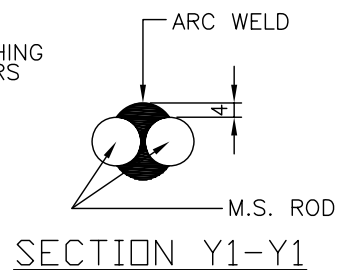
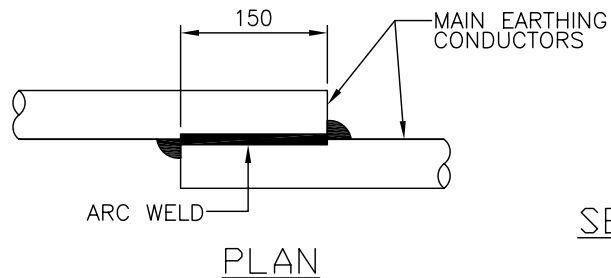
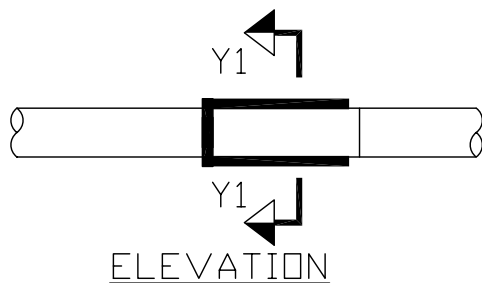
COMPUTERREF.NO.

DRG. No.

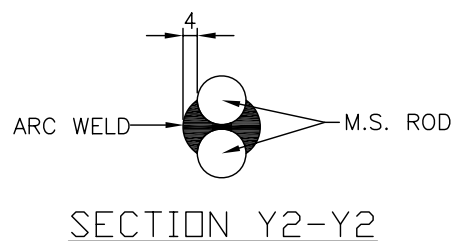
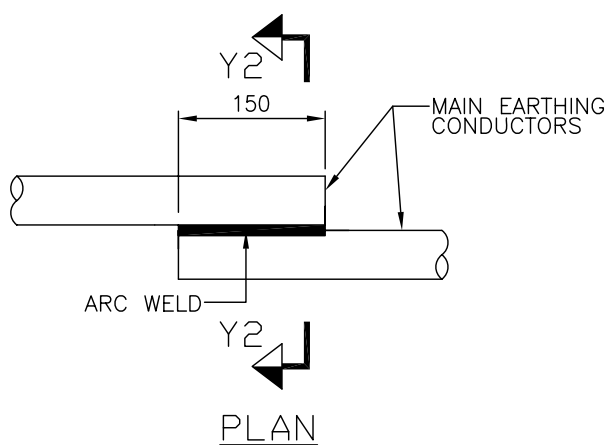
TB-4-301-316-007

REV. 00

SHEET No.
15



<CONDUCTOR IN HORIZONTAL PLANE>



<CONDUCTOR IN VERTICAL PLANE>



EQUIPMENT EARTHING DETAILS

WELDING DETAILS

COMPUTERREF.NO.

DRG. No.

TB-4-301-316-007

REV. 00

SHEET No.
16